



## Hambleton and Richmondshire district councils share services and deliver savings of **£850 000**



**Sharing a chief executive has paved the way for further joint working arrangements – putting the councils on the first stepping stones to address the recent local government cuts. The two authorities are now well on the way to establishing many shared services, all to be in place by 1 April 2011 – and with savings in excess of £850 000.**

### The challenge

Waste was one of the first services to become shared – back in September 2009 – and is already benefiting from a shared management structure and office staff. To make further savings, both councils wanted to explore the ‘route optimisation’ path, as well as the possibility of sharing routes, especially along the shared districts’ boundaries.

### The solution

RouteSmart software was purchased jointly by the two councils in August 2008 and tests showed that by adopting a three-day shared and two-day independent week, the two councils could utilise the waste vehicles across both districts, reduce the number of waste rounds by at least one vehicle and create a saving of £100 000. The RouteSmart solution is an extension to the ESRI® ArcMap product and utilises Ordnance Survey’s OS MasterMap® Integrated Transport Network™ (ITN) Layer road network with service locations (properties) obtained from both councils’ corporate gazetteers to provide a network solution that collects waste the most economical way.



Also under discussion are other money-saving scenarios, such as combining the two council depots into one, using waste transfer stations in surrounding districts and feeding into the creation of new transfer station/ waste disposal sites. Future work may include looking at route optimisation across the whole county, which could lead to even greater efficiencies and savings.

## The benefits

- £850 000 savings delivered from sharing services between the two districts.
- Joint waste collection has led to the reduction of waste rounds and at least one vehicle – delivering savings of £100 000.
- Additional savings of £278 500 are expected to be delivered from waste route optimisation and the sharing of management and office staff.
- Reduction in the carbon footprint, fuel charges and pollution.

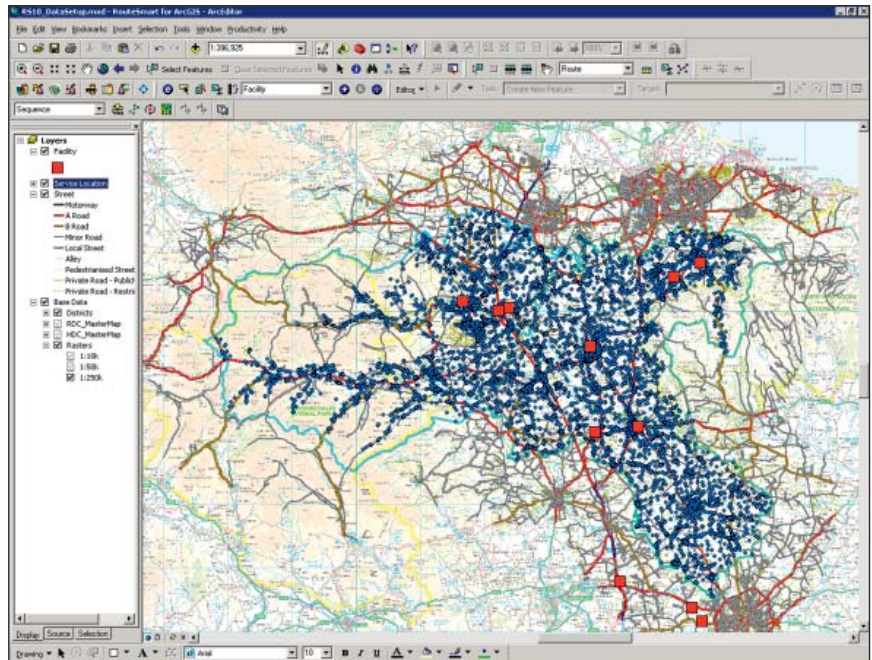
## Return on investment

*'Hambleton and Richmondshire district councils are aggressively targeting the savings agenda and actively seeking to reduce our carbon footprint. Along with workforce management software such as Masternaut® and fitting efficiency driving aids to our vehicles, RouteSmart is a business-critical tool to enable us to deliver large savings through shared services and optimising rounds. The information it provides us will enable us to make informed choices in how our rounds operate more efficiently in future.'*

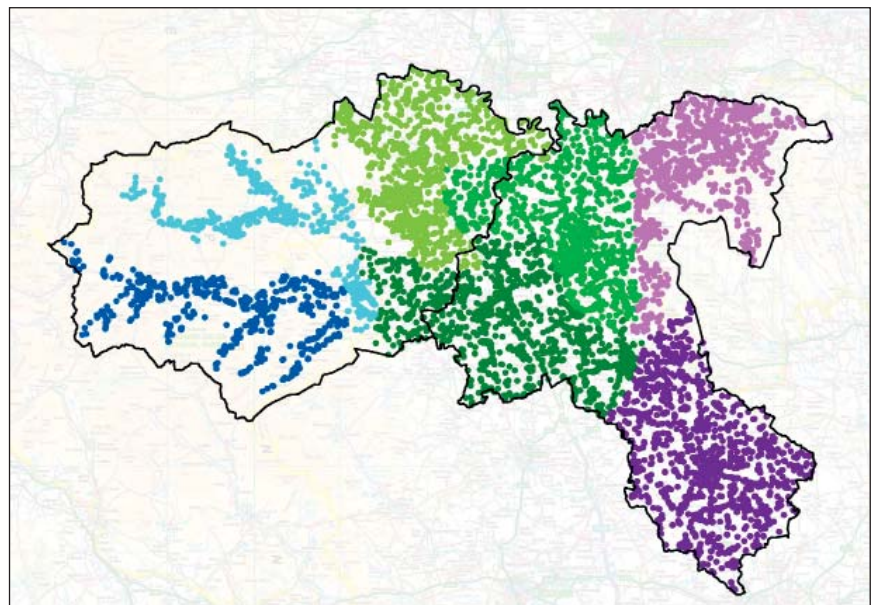
Paul Staines, Operations Manager, Richmondshire and Hambleton district councils.

## Products:

- OS MasterMap ITN Layer
- OS MasterMap Topography Layer
- OS Street View®
- 1:10 000 Scale Raster
- 1:50 000 Scale Colour Raster
- 1:250 000 Scale Colour Raster



RouteSmart with ArcMap: Data Input of ITN data, service locations for both districts and the depot and transfer stations used by both districts.



The proposed three-day shared and two-day independent working week. Green locations represent the shared working across the adjoining district boundaries.

[www.ordnancesurvey.co.uk](http://www.ordnancesurvey.co.uk)  
[customerservices@ordnancesurvey.co.uk](mailto:customerservices@ordnancesurvey.co.uk)

General enquiries: +44 (0)8456 05 05 05  
Dedicated Welsh Language HelpLine: 08456 05 05 04  
Textphone (deaf and hard of hearing users only please): +44 (0)23 8005 6146

**Customer Service Centre, Ordnance Survey, Adanac Drive, SOUTHAMPTON, United Kingdom, SO16 0AS.**

This document has been screened in accordance with the requirements set out in Ordnance Survey's Equality Scheme. If you have difficulty reading this information in its current format and would like to find out how to access it in a different format (Braille, large print, computer disk or in another language), please contact us on: +44 (0)8456 05 05 05.

Ordnance Survey, the OS Symbol, OS MasterMap and OS Street View are registered trademarks and Integrated Transport Network is a trademark of Ordnance Survey, the national mapping agency of Great Britain. Images courtesy of Hambleton District Council.

Ordnance Survey © Crown copyright  
D08286\_0111