

## ISL JOINS UK TRADE & INDUSTRY MISSION TO SMARTCITY EXPO, BARCELONA, NOV 15 – 17, 2016

For the first time Integrated Skills (UK) Ltd (ISL) will be joining the UKTI Trade Mission to SmartCity Expo, Barcelona, Nov 15 – 17, 2016 (<http://www.smartcityexpo.com/>)

The SmartCity Expo combines a Congress, exhibition and related activities that enable visitors to:

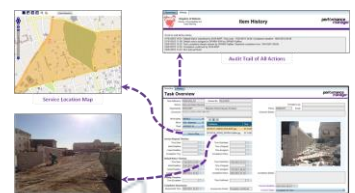
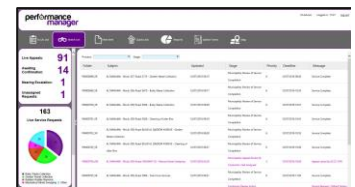
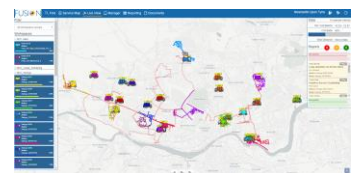
- Connect with over 400 speakers and thought leaders invited to debate future visions, goals and challenges to make cities smarter and more sustainable
- Explore all the latest Smart City projects and technologies that are making a difference to people's lives
- Form valuable links with key decision makers at the international meeting point between SmartCity leaders & administrators, academic & professional institutions and technology & service providers
- Find out about the latest pioneering and innovative projects from around the world

Focussing on the current issues that matter to Smart City development the congress is split into the following themes: Governance; Economy; Mobility; Society; Sustainability; Circular Economy; and Data & Technology.

UK Trade & Investment (UKTI) is a UK Government department working with businesses based in the UK to ensure their success in international markets, and encourage overseas companies to look to the UK as their global partner of choice. The UKTI operate a number of "Missions" typically to countries but also, as at the Smart City Expo, to World leading events. The UKTI has a large exhibition stand at the event where UK companies can promote their products and services.

As part of the UKTI mission, ISL will be promoting its SmartCity software solutions for Circular Economy and Sustainability, including:

- RouteSmart for ArcGIS – route optimisation for tactical & dynamic routing
- RaaS – online, automated route optimisation
- Performance Manager – job/asset/contract management
- Fusion – web-based solution to support the day-to-day management of round based services, such as, waste & recycling collection
- Navigator – in-cab GPS navigation & incident reporting for waste collection, street cleansing, etc.
- Smartphone & tablet apps for data collection and for public information
- Trafficworx solution for the management & coordination of road work activities



## About Integrated Skills Limited

Integrated Skills (UK) Limited ([www.ukisl.com](http://www.ukisl.com)) operating out of Romsey near Southampton, UK, is a specialist provider of GIS routing and optimisation software; in-cab, smartphone & tablet solutions; environmental management software; highways management software as well as environmental consultancy.

ISL's in-cab, smartphone & tablet apps enables users to collate and disseminate data related to services in four core sectors: Environmental Services, Highways, Parcel & Post and Utilities.

ISL's routing and optimisation software solutions maximise efficiency through enhanced route planning resulting in reductions in fleet size, mileage, planning time and human resource, more balanced routes/rounds, more accurate ETAs and enhanced route management information. The software is used in operational and strategic environments as well as for scenario planning when introducing new customers, vehicles, routes and services.

The company also provides the GIS based:

- Trafficworx solution for the management & coordination of road work activities
- Highwayworx solution for the management of highway maintenance
- Performance Manager for the management of environmental services, assets and contracts (as well as contractors)
- Fusion – an online route management solution with 'live view' of vehicle based operations

ISL is the leading partner of RouteSmart Technologies Inc.™ ([www.routesmart.com](http://www.routesmart.com)) for high density, door-by-door and street-by-street route optimisation software

ISL is a partner of ESRI for the ArcGIS platform ([www.esri.com](http://www.esri.com)), including ArcGIS Online.

ISL is an Ordnance Survey partner ([www.ordnancesurvey.co.uk](http://www.ordnancesurvey.co.uk)).

For further information contact Alan Paget, Sales & Marketing Director at ISL.

